

11th  
Annual

# NEVER SWEAT RANCH

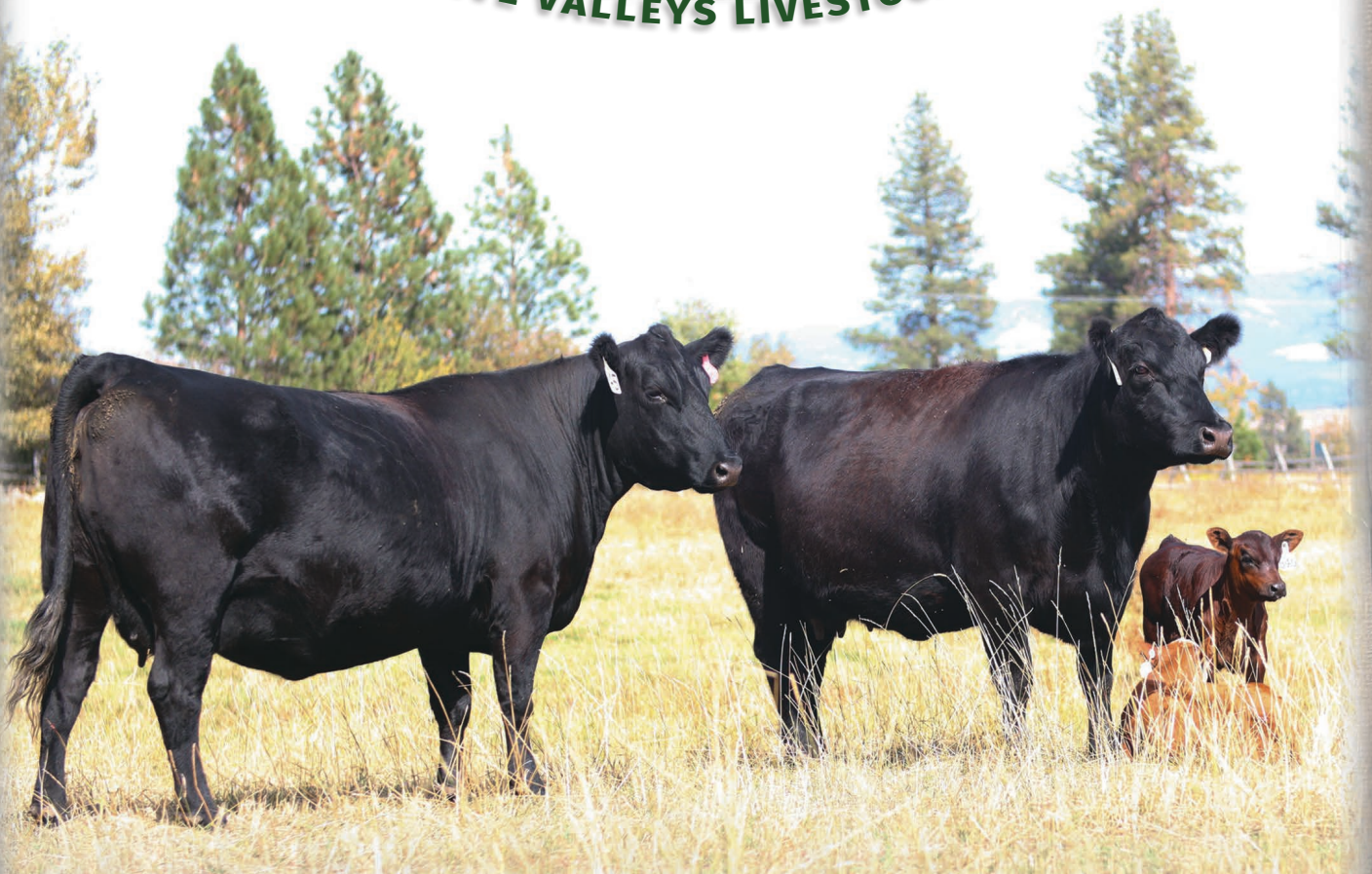
**FEBRUARY 24, 2024**

**1:00 PM MST**

## BULL SALE

**Missoula, MT**

**FIVE VALLEYS LIVESTOCK**



*Never  
Sweat  
RANCH*

**Cody & Ashley Lee**  
1025 Hwy 93 S. • Hamilton, MT 59840  
406-363-7099  
codyleeus@yahoo.com

— *SELLING* —

30 YEARLING BULLS  
4 HEREFORD BULLS  
6 TWO YEAR OLD BULLS  
3 PAIRS  
15 HEIFERS

**[www.neversweatranch.com](http://www.neversweatranch.com)**





### *Greetings Cattlemen,*

It is the time of year when a new calf crop is on its way and around the corner will be breeding season for next year's crop. The turning of the seasons is always exciting for those of us in agriculture. Breeding decisions that are made now could not be more important than they ever have been. The cattle market continues to set record highs in all categories and so it is vital to take advantage of that on the culling side of your herd management but also on the new genetics that you choose to bring into your herd. Producing good trait balanced cattle is how the rewards will be made in this cattle production cycle. We at Never Sweat Ranch are constantly working to produce animals that fit that target. This set of bulls and heifers are no different. They will go on to do a job for their new operations, and as always, they are bred to adapt and last in their environments.

We have developed the bulls on a high roughage ration to ensure soundness and long-term durability like we have in the past. It is our philosophy to develop these animals to be able to go out and work and do a job. Over conditioning them often inhibits the bull's ability to perform at a high level. The females in this year's offering are in their working clothes but are ready to breed whenever needed. They are an excellent group and are poised to make money for their owner. This year we have a new guest consignor with a group of five open heifers. These excellent heifers come from the Kerslake Ranch in Stevensville Montana. Dan and Sari Kerslake have been long time supporters of our program, and we welcome having them in this year's sale.

Just like last year we have Frontier Livestock hosting the sale online. We feel that it is very important for those people who are not able to attend the sale in person to be able view the animals and participate via the internet. The job that Frontier does helps take the guesswork out of deciding what animals will fit your program. In order to bid through Frontier Live, you must pre-register for the sale. If anyone has any questions let us know and we can assist you in that process.

The bulls have been freeze branded for permanent identification. This helps in the future when it comes time to make pasture decisions on bulls and the ear tags have long since been gone! We will have some updates to some of the epds on sale day once the genomic data gets processed. If you have any questions on any particular bull, we will do our best to help you find the bull that can best benefit your operation. Just like the last few years, there will be a pen of Hereford Bulls for your consideration. Baldy females are something that a person can never go wrong with, and we have personally seen some of the baldy heifers and young cows that have come from NSR Hereford bulls and to say that they were impressive would be an understatement. I think that this years offering of Herefords is amongst our best yet.

Your confidence in our program always remains our top priority. If you need any assistance throughout the year or have any questions, please contact us. Our service extends well beyond the delivery of your bull. Your success is our achievement. We look forward to talking about cattle and having fellowship with you on sale day!

Sincerely, *Never Sweat Ranch* | *Cody & Ashley Lee* | *Darrell & Jessica Lee*

**Never  
Sweat  
RANCH**

**Cody & Ashley Lee**  
1025 Hwy 93 S. • Hamilton, MT 59840  
406-363-7099  
codyleeus@yahoo.com

**[www.neversweatranch.com](http://www.neversweatranch.com)**



11th  
Annual

# NEVER SWEAT RANCH



## FEBRUARY 24, 2024

1:00 PM MST

## BULL SALE

Missoula, MT

*Come have lunch with us  
at 11:30 am MST*

FIVE VALLEYS LIVESTOCK

### Auctioneer

Rodger Jacobs (406) 698-7686 or (406) 259-2544

### Sale Representatives

Rick Peverly (406) 369-2640 Kurt Kangus (661) 706-2041

### Sale Location

Five Valleys Livestock  
8598 Robbins Rd • Missoula, MT 59808  
Located at the junction of I-90 and Hwy 93 at exit 96

### Sale order

Will be available sale day.

### Terms and Conditions

All cattle sell under the terms and conditions of the American Angus Association. Terms of the sale are cash on sale day, unless prior arrangements have been made. Announcements made the day of the sale take precedence over all the printed information.

### Health

Interstate health papers are furnished on all the cattle selling. All bulls are semen tested and are BVD-PI tested to be free by Dr. Clark D.V.M. Bulls have been given two doses each of wart and foot root vaccine. Heifers have had their fall vaccinations including the brucellosis vaccine and are ready to fit into your programs.

### Retained ownership

Never Sweat Ranch are retaining 1/3 revenue semen interest on all bulls, unless otherwise stated. Full possession and salvage value sell on all bulls.

### Trucking

Free delivery on all bulls up to 350 miles with total purchases of \$3000.00 or more. A \$100.00 discount per bull if taken home the day of the sale. The balance of the distance will be at cost. Bulls will be delivered starting mid-March. Females are to be taken home the day of the sale, unless prior arrangements have been made.

### Registrations

Transferred on request by buyer

### EPDs

EPDs are current as of 1/24/24. Updated EPDs can be viewed at [www.Angus.org](http://www.Angus.org)

### Liability

All persons attending the sale do so at their own risk, legal or otherwise for their own safety or the behavior of the animals. The owner's and sale staff assume no liability for property loss or any accidents that may occur.

### First Year breeding guarantee

All bulls selling for \$2,500.00 or more will be covered 50% by Never Sweat Ranch. If they are injured during their first breeding season and not able to return to service during that first breeding season. Breeding season is defined as the 90 day period following the first turnout of the bulls. 50% of the value of the injured bull, minus one half salvage value, will be given as credit in a future sale or toward a replacement bull if one is available. Salvage value, if any, will be split equally between Never Sweat Ranch and the buyer. All injured bulls must be diagnosed by a veterinarian of our choice. Please notify us as soon as possible should injury occur and prior to injured bull being sold for salvage. All claims must be made by September 1st 2023. This does not include death as that can be insured for.

*Example 1: A \$5,000.00 bull is injured, a credit of \$2,500.00 minus 1/2 any salvage value will be given to the buyer.*

*Example 2: A \$2,500.00 bull is injured, a credit of \$1,250.00 minus 1/2 any salvage value will be given to the buyer.*

*Example 3: A \$2,000.00 bull is injured, no credit is given. Buyer retains all salvage value.*

### Insurance

Never Sweat Ranch will help cover insurance costs with customers willing to participate. We will pay 4% of sale price up to \$5,999.00 or 6% on \$6,000.00 or greater towards a Stockmen's Insurance Policy. The balance of the policy will be paid by the customer. If a customer chooses to decline the policy Never Sweat Ranch has no obligation's to cover any loss due to injury, sickness or death. We guarantee all cattle to be sound the day of sale.

### Accommodations

Day's Inn Missoula Airport at Muralt's Travel Plaza (406)721-9776  
Broadway Inn (406) 532-3300  
C'mon Inn (406)543-4600  
Lunch and refreshments served at 11:30 a.m.

### Supplement information

Will be available on sale day.

### Genetic Recessives

This sale offering is free of all known recessives monitored by the American Angus Association, other than the bulls with DDC listed after their registration number.



## Driving the science of better breeding

There's little room for error in the cattle business. Producers need the most advanced information to make smart selection decisions, and Angus Genetics Inc. (AGI) provides it through genomic-enhanced expected progeny differences (GE-EPDs).

EPDs that traditionally contained all pedigree, performance and progeny information now also include results from available genomic, or DNA, tests. Breeders who use genomic technology give buyers access to AGI-generated GE-EPDs that provide:

Increased predictability and decreased risk for young and unproven animals due to enhanced accuracy of EPDs

Better characterization of genetics for difficult-to-measure performance traits (such as carcass traits, maternal traits and feed efficiency)

The ability to make more rapid progress for traits that are important to you, due to:

- more accurate selection
- easier identification of genetic outliers
- the ability to propagate young animals with confidence earlier in their lives

In fact, GE-EPDs on unproven animals have the same amount of accuracy as if they had recorded 8-33 calves, depending on the trait. That's valuable insight, offered regularly through the breed's weekly national cattle evaluation at [www.angus.org](http://www.angus.org).

### How do you know if EPDs are genomic-enhanced?

Ask your breeder, refer to the registration paper, or look for the AGI GE-EPD logo, Angus GS™ powered by partner Neogen GeneSeek or the HD50k or i50k by partner Zoetis.



## Explanation of EPDs

1

### NSR RESILIENT 311

**Bull** AAA 20830632 FREEZE BRAND: 311 CALVED: 02/14/23  
 SITZ STELLAR 726D MOHNEN SUBSTANTIAL 272#  
**SITZ RESILIENT 10208** SITZ PRIDE 200B  
 SITZ MISS BURGESS 1856 SITZ TOP GAME 561X#  
 SITZ MISS BURGESS 4381  
 COLE CREEK CEDAR RIDGE 1V# COLE CREEK BLACK CEDAR 46P#  
**N S R MISS EMULOUS 651#** COLE CREEK CLOVANADA 49S#  
 NSR MISS EMULOUS 400 S CHISUM 6175#  
 N S R MISS EMULOUS 029

Birth Wt	205 Wt	WR				
<b>93</b>	<b>776</b>	<b>ET</b>				
CED	BW	WW	YW	Milk	\$M	\$W
<b>+3</b>	<b>+2.7</b>	<b>+73</b>	<b>+122</b>	<b>+28</b>	<b>+84</b>	<b>+67</b>

**Actual Birth Weight:** The actual weight of the calf within 24 hours after birth, measured in pounds.

**205 Day Weight:** The weaning weight of the calf adjusted to a common age of 205 days and adjusted for the age of the dam, measured in pounds.

**205 Day Ratio:** A direct comparison of one calf to all others in his contemporary group. A weaning ratio of 100 is always average.

However, some individuals are "average" only because their contemporary group was small.

**Calving Ease Direct (CED) EPD:** is expressed as a difference in percentage of unassisted births, with a higher value indicating greater calving ease in first-calf heifers. It predicts the average difference in ease with which an sire's calves will be born when he is bred to first-calf heifers.

**Birth (BW) EPD:** The birth weight EPD is a predictor of an individual's contribution to its progeny's weight at birth and is a comparison of breed average, measured in pounds.

**Weaning (WW) EPD:** The weaning weight EPD is the amount of increase or decrease in weaning weight you could expect from the progeny of a bull compared to an average bull in the breed for weaning weight, measured in pounds.

**Milk EPD:** The milk EPD is a predictor of a sire's genetic merit for milk and mothering ability expressed in his daughters, measured in pounds. It is that part of weaning weight attributed to milk production.

**Yearling Weight (YW) EPD:** The yearling weight EPD is the amount of increase or decrease in yearling weight one could expect from the progeny of a bull compared to an average bull in the breed for yearling weight, measured in pounds.

**Weaned Calf Value (\$W):** An index value expressed in dollars per head, is the expected avg difference in future progeny performance for preweaning merit.

**Maternal Weaned Calf Value (\$M):** An index expressed in dollars per head, predicts profitability differences from conception to weaning with the underlying breeding objective assuming that individuals retain their own replacement females within herd and sell the rest of the cull female and all male progeny as feeder calves.



# Promotional Heifer

Reg # 20830633

WIN HER  
SALE DAY!



Here is an opportunity to bring home a beautiful registered Sitz Resilient heifer. She is gentle and easy-going and should fit into just about anyone's herd. She is in the top 5% for \$M. Every lot purchased in the sale is your opportunity to win this heifer.

*Never  
Sweat  
RANCH*



# Yearling Angus Bulls

## SITZ RESILIENT 10208



REFERENCE  
SIRE

### SITZ RESILIENT 10208

AAA \*19057457

TATTOO: 10208

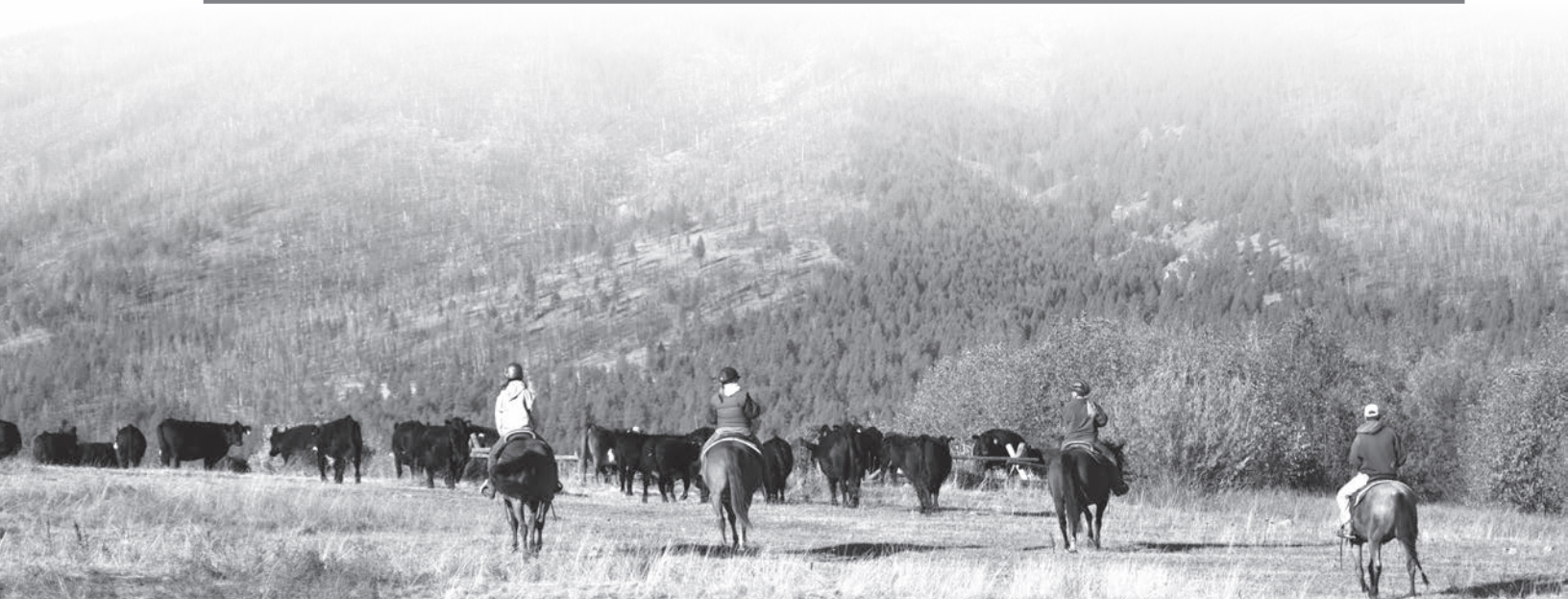
CALVED: 02/15/2018

MOHNEN SUBSTANTIAL 272#  
**SITZ STELLAR 726D**  
SITZ PRIDE 200B

SITZ TOP GAME 561X#  
**SITZ MISS BURGESS 1856**  
SITZ MISS BURGESS 4381

BENFIELD SUBSTANCE 8506#  
MOHNEN GLYN MAWR ELBA 1758  
CONNEALY FINAL PRODUCT#  
SITZ PRIDE 308Y#  
GDAR GAME DAY 449#  
SITZ PRIDE 88T#  
SITZ RAINMAKER 10899  
SITZ MISS BURGESS 1609

CED	Birth	Wean	Year	Milk	Scrotal
<b>+7</b>	<b>+6</b>	<b>+76</b>	<b>+132</b>	<b>+22</b>	<b>+1.13</b>
Marb	REA	Fat	\$W	\$F	\$G
<b>+98</b>	<b>+55</b>	<b>+015</b>	<b>+80</b>	<b>+76</b>	<b>+144</b>





# Yearling Angus Bulls



1

## NSR RESILIENT 311

**Bull** AAA 20830632 FREEZE BRAND: 311 CALVED: 02/14/23  
 SITZ STELLAR 726D MOHNEN SUBSTANTIAL 272#  
**SITZ RESILIENT 10208** SITZ PRIDE 200B  
 SITZ MISS BURGESS 1856 SITZ TOP GAME 561X#  
 SITZ MISS BURGESS 4381  
 COLE CREEK CEDAR RIDGE 1V# COLE CREEK BLACK CEDAR 46P#  
**N S R MISS EMULOUS 651#** COLE CREEK CLOVANADA 49S#  
 NSR MISS EMULOUS 400 S CHISUM 6175#  
 N S R MISS EMULOUS 029

Birth Wt	205 Wt	WR				
93	776	ET				
CED	BW	WW	YW	Milk	\$M	\$W
+3	+2.7	+73	+122	+28	+84	+67

A phenotypic standout in this years offering, this bull has the look. This bull has the performance and pedigree to make him a great herd sire. His dam is an integral part of the Never Sweat program. She has a WR of 6@107, YR of 5@102, and calving interval of 6@359.



2

## NSR RESILIENT 303

**Bull** AAA 20835879 FREEZE BRAND: 303 CALVED: 01/28/23  
 SITZ STELLAR 726D MOHNEN SUBSTANTIAL 272#  
**SITZ RESILIENT 10208** SITZ PRIDE 200B  
 SITZ MISS BURGESS 1856 SITZ TOP GAME 561X#  
 SITZ MISS BURGESS 4381  
 VIN-MAR O'REILLY FACTOR# S A V FINAL ANSWER 0035#  
**N S R LADY ELBAS 413** VIN-MAR EDELLA 2827#  
 N S R ELBAS PARTINA 907 CONNEALY THUNDER#  
 L A R SPECIAL ELBAS 54#

Birth Wt	205 Wt	WR				
82	732	101				
CED	BW	WW	YW	Milk	\$M	\$W
+8	-0.1	+61	+107	+27	+66	+58

Hard to find a hole in this bull! This well balanced bull offers a combination of phenotype, performance data, and pedigree makes him unique in this offering. This calving ease bull is backed by a beautiful dam with a WR of 6@102 and YR of 3@105. This is a herd bull in the making!

# Yearling Angus Bulls



3

## NSR RESILIENT 312



**Bull** AAA +20835888 FREEZE BRAND: 312 CALVED: 02/16/23  
 SITZ STELLAR 726D MOHNEN SUBSTANTIAL 272#  
**SITZ RESILIENT 10208** SITZ PRIDE 200B  
 SITZ MISS BURGESS 1856 SITZ TOP GAME 561X#  
 SITZ MISS BURGESS 4381  
 HYLINE RIGHT TIME 338# LEACHMAN RIGHT TIME#  
**L A R RITA GAL 62** HYLINE PRIDE 265  
 C A R RITA 1724 D H D TRAVELER 6807#  
 C A R LADY RITA KAREN 724

Birth Wt	205 Wt	WR				
85	720	ET				
CED	BW	WW	YW	Milk	\$M	\$W
+2	+2.6	+66	+121	+25	+68	+60

Offering two impressive sire prospects in this years offering. They are backed by a great cow family, L A R Rita Gal 62, who has been one of the best cows that produces consistant growthy calves with maternal capabilities. Their dam has a WR of 11@108 and YR of 9@108. Here is your chance to own two of the best of the Never Sweat program.

4

## NSR RESILIENT 310



**Bull** AAA +20835885 FREEZE BRAND: 310 CALVED: 02/12/23  
 SITZ STELLAR 726D MOHNEN SUBSTANTIAL 272#  
**SITZ RESILIENT 10208** SITZ PRIDE 200B  
 SITZ MISS BURGESS 1856 SITZ TOP GAME 561X#  
 SITZ MISS BURGESS 4381  
 HYLINE RIGHT TIME 338# LEACHMAN RIGHT TIME#  
**L A R RITA GAL 62** HYLINE PRIDE 265  
 C A R RITA 1724 D H D TRAVELER 6807#  
 C A R LADY RITA KAREN 724

Birth Wt	205 Wt	WR				
86	763	ET				
CED	BW	WW	YW	Milk	\$M	\$W
+2	+2.6	+66	+121	+25	+68	+60

5

## NSR RESILIENT 326

**Bull** AAA 20835875 FREEZE BRAND: 326 CALVED: 03/07/23  
 SITZ STELLAR 726D MOHNEN SUBSTANTIAL 272#  
**SITZ RESILIENT 10208** SITZ PRIDE 200B  
 SITZ MISS BURGESS 1856 SITZ TOP GAME 561X#  
 SITZ MISS BURGESS 4381  
 O C C JUNEAU 807J#  
**N S R RITA GAL 536** O C C EMBLAZON 854E#  
 L A R RITA GAL 62 O C C DIXIE ERICA 903E  
 HYLINE RIGHT TIME 338#  
 C A R RITA 1724

Birth Wt	205 Wt	WR				
88	661	98				
CED	BW	WW	YW	Milk	\$M	\$W
+3	+2.1	+69	+119	+22	+82	+59

A lot of style and performance in this Resilient son. He is thick made and well footed. He is back by the great cow family L A R Rita Gal 62. Here is you chance to own part of the maternal program.



Dam of Lot 3, 4, & 24





# Yearling Angus Bulls

6

## NSR RESILIENT 305

**Bull** AAA 20830619 FREEZE BRAND: 305 CALVED: 02/06/23  
 SITZ STELLAR 726D MOHNEN SUBSTANTIAL 272#  
**SITZ RESILIENT 10208** SITZ PRIDE 200B  
 SITZ MISS BURGESS 1856 SITZ TOP GAME 561X#  
 SITZ MISS BURGESS 4381  
 KOUPAL JUNEAU 797# O C C JUNEAU 807J#  
**N S R BLACKCAP 143** KOUPALS ELBA 187  
 N S R BLACKCAP 109# OX BOW EMBLAZON 6408  
 TAR BLACKCAP 904

Birth Wt	205 Wt	WR				
69	679	101				
CED	BW	WW	YW	Milk	\$M	\$W
+8	+0.1	+67	+119	+25	+73	+59

Easy going well balanced bull.

Dam is a neat uddered first calf heifer of Koupal Juneau 797. The dam is backed by another great N S R cow, N S R Blackcap 109.



7

## NSR RESILIENT 309

**Bull** AAA 20830623 FREEZE BRAND: 309 CALVED: 02/10/23  
 SITZ STELLAR 726D MOHNEN SUBSTANTIAL 272#  
**SITZ RESILIENT 10208** SITZ PRIDE 200B  
 SITZ MISS BURGESS 1856 SITZ TOP GAME 561X#  
 SITZ MISS BURGESS 4381  
 COLE CREEK BLACK CEDAR 46P# C H QUANTUM 6247#  
**N S R COUNTESS LINDA 315** COLE CREEK CLOVA JUANADA 67  
 N S R COUNTESS LINDA 727 MYTTY IN FOCUS#  
 MAR MISS LINDA 527

Birth Wt	205 Wt	WR				
72	678	101				
CED	BW	WW	YW	Milk	\$M	\$W
+10	-1.1	+61	+105	+22	+78	+58

A calving ease prospect that stems from a great maternal cow. She has been as consistent as it gets. This bull should leave excellent females behind.

*Never  
Sweat  
RANCH*

8

## NSR RESILIENT 353

**Bull** AAA 20840602 FREEZE BRAND: 353 CALVED: 09/29/22  
 SITZ STELLAR 726D MOHNEN SUBSTANTIAL 272#  
**SITZ RESILIENT 10208** SITZ PRIDE 200B  
 SITZ MISS BURGESS 1856 SITZ TOP GAME 561X#  
 SITZ MISS BURGESS 4381  
 COLE CREEK BLACK CEDAR 46P# C H QUANTUM 6247#  
**N S R EISA EVERGREEN 544** COLE CREEK CLOVA JUANADA 67  
 ER EISA EVERGREEN P548 SITZ ALLIANCE 6595#  
 ER EISA EVERGREEN K245

Birth Wt	205 Wt	WR				
85						
CED	BW	WW	YW	Milk	\$M	\$W
+5	+1.5	+65	+117	+24	+74	+54

Super docile and nice footed bull.

His dam is an excellent producer with a WR of 2@108 and YR of 1@109.





# Yearling Angus Bulls

## SAV Renovation 6822



REFERENCE  
SIRE

## SAV RENOVATION 6822

AAA +\*18579309

TATTOO: 6822

CALVED: 01/28/2016

RITO 707 OF IDEAL 3407 7075  
**SAV RENOWN 3439#**

SAV BLACKCAP MAY 4136

SAV 004 DENSITY 4336#

**SAV MADAME PRIDE 0151**

SAV MADAME PRIDE 0075

R R RITO 707#  
IDEAL 3407 OF 1418 076

SAV 8180 TRAVELER 004#  
SAV MAY 2397#

SAV 8180 TRAVELER 004  
SAV MAY 7238

SA F 598 BANDO 5175#  
SAV MADAME PRIDE 8264

CED	Birth	Wean	Year	Milk	Scrotal	
+3	+2.5	+66	+121	+17	+1.18	
Marb	REA	Fat	\$W	\$F	\$G	\$B
+47	+27	+0.096	+50	+79	+32	+111





# Yearling Angus Bulls



9

## NSR RENOVATION 332

**Bull** AAA 20830629 FREEZE BRAND: 332 CALVED: 03/12/23  
 S A V RENOWN 3439# RITO 707 OF IDEAL 3407 7075  
**S A V RENOVATION 6822** S A V BLACKCAP MAY 4136  
 S A V MADAME PRIDE 0151 S A V 004 DENSITY 4336#  
 S A V MADAME PRIDE 0075  
 O C C JUNEAU 807J# O C C EMBLAZON 854E#  
**N S R RITA GAL 530** O C C DIXIE ERICA 903E  
 L A R RITA GAL 62 HYLINE RIGHT TIME 338#  
 C A R RITA 1724

Birth Wt	205 Wt	WR				
94	702	104				
CED	BW	WW	YW	Milk	\$M	\$W
-2	+3.8	+64	+114	+21	+69	+44

Another standout bull that performed and is backed again by some great cow genetics going back to N S R Rita Gal 62.  
 His dam is a sweat neat udder cow with a WR of 5@103 and a YR of 3@100.



10

## NSR RENOVATION 319

**Bull** AAA 20830641 FREEZE BRAND: 319 CALVED: 02/28/23  
 S A V RENOWN 3439# RITO 707 OF IDEAL 3407 7075  
**S A V RENOVATION 6822** S A V BLACKCAP MAY 4136  
 S A V MADAME PRIDE 0151 S A V 004 DENSITY 4336#  
 S A V MADAME PRIDE 0075  
 O C C JUNEAU 807J# O C C EMBLAZON 854E#  
**COLEMAN DONNA 4110** O C C DIXIE ERICA 903E  
 COLEMAN DONNA 905 S A V FINAL ANSWER 0035#  
 COLEMAN DONNA 732

Birth Wt	205 Wt	WR				
93	651	97				
CED	BW	WW	YW	Milk	\$M	\$W
+2	+2.8	+58	+100	+22	+80	+49

A phenotypic Renovation standout with exceptional muscle shape who is bold through the middle and very good footed.

His dam is a model cow that stems from one of the best cow bulls O C C Juneau 807J. She has a WR of 8@103, YR of 6@103, and a calving interval of 8@371.



11

## NSR RENOVATION 329

**Bull** AAA 20830626 FREEZE BRAND: 329 CALVED: 03/08/23  
 S A V RENOWN 3439# RITO 707 OF IDEAL 3407 7075  
**S A V RENOVATION 6822** S A V BLACKCAP MAY 4136  
 S A V MADAME PRIDE 0151 S A V 004 DENSITY 4336#  
 S A V MADAME PRIDE 0075  
 VIN-MAR O'REILLY FACTOR# S A V FINAL ANSWER 0035#  
**N S R COUNTESS POLLY 412** VIN-MAR EDELLA 2827#  
 N S R COUNTESS POLLY 721# MYTTY IN FOCUS#  
 TAR PARK LAKE 725

Birth Wt	205 Wt	WR				
86	644	96				
CED	BW	WW	YW	Milk	\$M	\$W
+2	+2.3	+60	+113	+23	+52	+47

A great pedigree that is filled with promise in this Renovation son.  
 His dam is a well made cow with plenty of performance with a WR of 6@111 and YR of 5@114.

# Hereford Bulls

## NJW 247C 139E Dollar 137G



REFERENCE  
SIRE

## NJW 247C 139E DOLLAR 137G

AHA P44056527

TATTOO: 247C137G

CALVED: 02/17/2019

LJR 023R WHITMORE 10W  
**NJW 139C 10W DOLLAR 139E**  
NJW 149Z 88X LEXY 139C

THM DURANGO 4037  
**NJW 80L 4037 PRAIRIE 247C**  
NJW 12E PRAIRIE 80L

KJ C&L J119 LOGIC 023R ET  
LJR MICKEY 278N  
NJW 98S R117 RIBEYE 88X ET  
NJW 27R 100W LEXY 149Z  
CS BOOMER 29F  
THM 7085 VICTRA 9036  
KLONDIKE 28U 707B  
NJW 25C 1A VACA 12E

CE	Birth	Wean	Year	MM	Scrotal
<b>+4.6</b>	<b>+1.9</b>	<b>+64</b>	<b>+106</b>	<b>+28</b>	<b>+1.0</b>
Marb	REA	Fat	BMI(\$)	BII(\$)	CHB(\$)
<b>+.05</b>	<b>+.03</b>	<b>+.032</b>	<b>+322</b>	<b>+401</b>	<b>+84</b>

## /S Mandate 66589 ET



REFERENCE  
SIRE

## /S MANDATE 66589 ET

AHA 43834732

TATTOO: 66589

CALVED: 08/31/2016

HYALITE ON TARGET 936  
**R LEADER 6964**  
R MISS REVOLUTION 1009

SHF RIB EYE M326 R117  
**/S LADY DOMINO 0158X**  
/S LADY DOMINO 652S

SCHU-LAR ON TARGET 22S  
HYALITE TS LASS 310  
MSU TCF REVOLUTION 4R  
R MISS WRANGLER 3007  
KCF BENNETT 3008 M326  
HVH MISS HUDSON 83K 8M  
CL 1 DOMINO 484  
/S MISS PEERLESS 71

CE	Birth	Wean	Year	MM	Scrotal
<b>+8.8</b>	<b>-1.4</b>	<b>+67</b>	<b>+440</b>	<b>+25</b>	<b>+1.5</b>
Marb	REA	Fat	BMI(\$)	BII(\$)	CHB(\$)
<b>+.28</b>	<b>+.28</b>	<b>+.111</b>	<b>+322</b>	<b>+541</b>	<b>+111</b>



# Hereford Bulls



**12**

## NSR DOLLAR 6K

**Bull** AHA 44424559 TATTOO: 6K CALVED: 03/17/22  
 NJW 139C 10W DOLLAR 139E LJR 023R WHITMORE 10W  
**NJW 247C 139E DOLLAR 137G** NJW 149Z 88X LEXY 139C ET  
 NJW 80L 4037 PRAIRIE 247C ET THM DURANGO 4037  
 NJW 12E PRAIRIE 80L  
 LOEWEN C&L 4B CT RIGHT ON ET SHF WONDER M326 W18 ET  
**/S LADY RIGHT ON 7192E** HVH OKSANA 4L 33N  
 /S LADY JET 3018A THR THOR 4029  
 JET MS L806

Birth Wt	205 Wt	WR	CE	BW	WW	YW	MM
<b>92</b>	<b>550</b>		<b>+2.4</b>	<b>+4.5</b>	<b>+66</b>	<b>+111</b>	<b>+29</b>
Marb	REA	Fat	\$BMI	\$BII	\$CHB		
<b>+0.03</b>	<b>+0.23</b>	<b>+0.022</b>	<b>+268</b>	<b>+343</b>	<b>+96</b>		

This son of Dollar 137G offers really impressive growth and comes from a easy fleshing cow. He should leave some really nice baldies behind.



**14**

## NSR DOLLAR 9L

**Bull** AHA 44525695 TATTOO: 9L CALVED: 03/02/23  
 NJW 139C 10W DOLLAR 139E LJR 023R WHITMORE 10W  
**NJW 247C 139E DOLLAR 137G** NJW 149Z 88X LEXY 139C ET  
 NJW 80L 4037 PRAIRIE 247C ET THM DURANGO 4037  
 NJW 12E PRAIRIE 80L  
 CL 1 DOMINO 955W CL 1 DOMINO 637S 1ET  
**/S LADY DOMINO 7105E** CL 1 DOMINETTE 5152R  
 JET MS X601 EFBEEF SCHU-LAR PROFICIENT N093  
 JET MS Y359

Birth Wt	205 Wt	WR	CE	BW	WW	YW	MM
<b>74</b>	<b>721</b>		<b>+4.9</b>	<b>+2.4</b>	<b>+64</b>	<b>+99</b>	<b>+30</b>
Marb	REA	Fat	\$BMI	\$BII	\$CHB		
<b>+0.07</b>	<b>+0.22</b>	<b>+0.022</b>	<b>+292</b>	<b>+369</b>	<b>+94</b>		

A herd bull prospect that is loaded with performance and muscle. His dam is a highly productive cow from the line 1 domino family.

**13**

## NSR MANDATE 3L

**Bull** AHA 44525698 TATTOO: 3L CALVED: 01/08/23  
 R LEADER 6964 HYALITE ON TARGET 936  
**/S MANDATE 66589 ET** R MISS REVOLUTION 1009  
 /S LADY DOMINO 0158X SHF RIB EYE M326 R117  
 /S LADY DOMINO 652S  
 NJW 76S 27A SALUTE 201C NJW 135U 10Y HOMETOWN 27A  
**TDP MELODY 33H** NJW 55N STARDUST 76S  
 TDP MELODY TDP CROSSOVER Z400  
 TDP MELODY 419Y ET

Birth Wt	205 Wt	WR	CE	BW	WW	YW	MM
<b>85</b>			<b>+8.2</b>	<b>+1</b>	<b>+55</b>	<b>+87</b>	<b>+27</b>
Marb	REA	Fat	BMI(\$)	BII(\$)	CHB(\$)		
<b>+0.13</b>	<b>+0.34</b>	<b>+0.072</b>	<b>+372</b>	<b>+448</b>	<b>+106</b>		

A true heifer bull from the dark pigmented Mandate 66589. This bull is feed efficient and very good on the move.

**15**

## NSR DOLLAR 2L

**Bull** AHA 44525697 TATTOO: 2L CALVED: 03/09/23  
 NJW 139C 10W DOLLAR 139E LJR 023R WHITMORE 10W  
**NJW 247C 139E DOLLAR 137G** NJW 149Z 88X LEXY 139C ET  
 NJW 80L 4037 PRAIRIE 247C ET THM DURANGO 4037  
 NJW 12E PRAIRIE 80L  
 R LEADER 6964 HYALITE ON TARGET 936  
**ASM 705 MISS CAROLINE 736E ET** R MISS REVOLUTION 1009  
 ASM 122L MISS 705ET REMITALL ONLINE 122L  
 KSU MISS 6052F 308 ET

Birth Wt	205 Wt	WR	CE	BW	WW	YW	MM
<b>88</b>	<b>613</b>		<b>+6.7</b>	<b>+1.5</b>	<b>+62</b>	<b>+101</b>	<b>+26</b>
Marb	REA	Fat	\$BMI	\$BII	\$CHB		
<b>+0.09</b>	<b>+0.24</b>	<b>+0.042</b>	<b>+339</b>	<b>+417</b>	<b>+102</b>		

Thickness is what stands out on this Dollar 137G son. He is a dark red color with a gentle disposition.



# Yearling Angus Bulls

*S A V Scale House 0845*



REFERENCE  
SIRE

*S A V SCALE HOUSE 0845*

AAA +\*20000000

TATTOO: 0845

CALVED: 12/13/2019

SITZ UPWARD 307R#  
**MARCYS SCALE CRUSHER**  
MARCYS ERICA 393#

RITO 707 OF IDEAL 3407 7075  
**S A V BLACKCAP MAY 1416**  
S A V BLACKCAP MAY 4136

CONNELLY ONWARD#  
SITZ HENRIETTA PRIDE 81M  
LEACHMAN RIGHT TIME#  
G MARCY ERICA 118  
R R RITO 707#  
IDEAL 3407 OF 1418 076  
S A V 8180 TRAVELER 004#  
S A V MAY 2397#

CED	Birth	Wean	Year	Milk	Scrotal	
+4	+2.2	+78	+141	+17	+1.03	
Marb	REA	Fat	\$W	\$F	\$G	\$B
+30	+71	-.021	+59	+119	+39	+158





# Yearling Angus Bulls



16

## NSR SCALE HOUSE 324

**Bull** AAA 20838026 FREEZE BRAND: 324 CALVED: 03/06/23  
 MARCYS SCALE CRUSHER SITZ UPWARD 307R#  
**S A V SCALE HOUSE 0845** MARCYS ERICA 393#  
 S A V BLACKCAP MAY 1416 RITO 707 OF IDEAL 3407 7075  
 S A V BLACKCAP MAY 4136  
 O C C EMBLAZON 854E# D H D TRAVELER 6807#  
**N S R ELBAS ELONA 024** DIXIE ERICA OF C H 1019  
 L A R SPECIAL ELBAS 54# W C C SPECIAL DESIGN L309#  
 LADY ELBAS C08 H A R B

Birth Wt	205 Wt	WR				
90	670	99				
CED	BW	WW	YW	Milk	\$M	\$W
+3	+3.0	+62	+111	+20	+50	+44

Excellent prospect here with a great maternal pedigree. His powerful dam holds a WR of 11@100, YR of 4@105, and calving interval of 12@367.



17

## NSR SCALE HOUSE 330

**Bull** AAA 20838015 FREEZE BRAND: 330 CALVED: 03/10/23  
 MARCYS SCALE CRUSHER SITZ UPWARD 307R#  
**S A V SCALE HOUSE 0845** MARCYS ERICA 393#  
 S A V BLACKCAP MAY 1416 RITO 707 OF IDEAL 3407 7075  
 S A V BLACKCAP MAY 4136  
 EXAR DENVER 2002B# EXAR UPSHOT 0562B#  
**N S R EVERELDA ENTENSE 527** EXAR ROYAL LASS 1067  
 COLEMAN EVERELDA ENTENSE 8156 O C C EMBLAZON 854E#  
 BT EVERELDA ENTENSE 613L

Birth Wt	205 Wt	WR				
84	703	104				
CED	BW	WW	YW	Milk	\$M	\$W
+7	+1.5	+67	+114	+21	+60	+55

Stylish in his build and thick, this guy is a looker!  
 Dam has a WR of 5@105.



# Yearling Angus Bulls

*N S R Sitka 108*



REFERENCE  
SIRE

*N S R SITKA 108*

AAA +\*20210880

FREEZE BRAND: 108

CALVED: 02/15/2021

O C C EMBLAZON 854E#  
**O C C JUNEAU 807J#**  
O C C DIXIE ERICA 903E

SITZ TRAVELER 8180#  
**BOHI ABIGALE 6014**  
S A V ABIGALE 6062

D H D TRAVELER 6807#  
DIXIE ERICA OF C H 1019

O C C CANDOR 763C  
O C C DIXIE ERICA 799B

G D A R TRAVELER 71#  
SITZ EVERELDA ENTENSE 1137

BON VIEW EMULATION EXT 473#  
CIRCLE A ABIGALE 3008

CED	Birth	Wean	Year	Milk	Scrotal	
<b>+4</b>	<b>+1.4</b>	<b>+63</b>	<b>+113</b>	<b>+30</b>	<b>+.65</b>	
Marb	REA	Fat	\$W	\$F	\$G	\$B
<b>+.04</b>	<b>+.63</b>	<b>+.066</b>	<b>+67</b>	<b>+79</b>	<b>+17</b>	<b>+96</b>





# Yearling Angus Bulls



18

**Bull** AAA Pending FREEZE BRAND: 306 CALVED:  
 O C C JUNEAU 807J# O C C EMBLAZON 854E#  
**N S R SITKA 108** DIXIE ERICA OF C H 1019  
 BOHI ABIGALE 6014 O C C CANDOR 763C  
 O C C DIXIE ERICA 799B  
 S A V RAINDANCE 6848# COLEMAN CHARLO 0256#  
**N S R ELBA LADY 950** S A V BLACKCAP MAY 4136  
 N S R ELBA LADY 307 S CHISUM 6175#  
 L A R SPECIAL ELBAS 54#

Birth Wt	205 Wt	WR				
<b>86</b>	<b>604</b>	<b>88</b>				
CED	BW	WW	YW	Milk	\$M	\$W
<b>I+7</b>	<b>I+.8</b>	<b>I+61</b>	<b>I+110</b>	<b>I+26</b>		

This maternal bred bull is easy fleshing, good moving, and gentle. Calving Ease Trait Bull.



19

**Bull** AAA Pending FREEZE BRAND: 322 CALVED:  
 O C C JUNEAU 807J# O C C EMBLAZON 854E#  
**N S R SITKA 108** DIXIE ERICA OF C H 1019  
 BOHI ABIGALE 6014 O C C CANDOR 763C  
 O C C DIXIE ERICA 799B  
 S CHISUM 376 S CHISUM 6175#  
**NSR BLACKCAP 167** S QUEEN ESSA 208#  
 N S R BLACKCAP 762 S A V TEN SPEED 3022#  
 N S R BLACKCAP 206

Birth Wt	205 Wt	WR				
<b>81</b>	<b>668</b>	<b>99</b>				
CED	BW	WW	YW	Milk	\$M	\$W
<b>I+6</b>	<b>I+1.7</b>	<b>I+59</b>	<b>I+104</b>	<b>I+27</b>		

Easy going well balance heavy fleshing bull.





# Yearling Angus Bulls

## Montana High Stepper 0074



REFERENCE  
SIRE

## MONTANA HIGH STEPPER 0074

AAA +\*19856346

TATTOO: 0074

CALVED: 04/04/2020

RITO 707 OF IDEAL 3407 7075  
**S A V RENOWN 3439#**  
 S A V BLACKCAP MAY 4136  
 PLATTEMERE WEIGH UP K360#  
**DEER VALLEY BLACKCAP 4153**  
 DEER VALLEY BLACKCAP 1122

R R RITO 707#  
 IDEAL 3407 OF 1418 076  
 S A V 8180 TRAVELER 004#  
 S A V MAY 2397#  
 SITZ UPWARD 307R#  
 BARBARA OF PLATTEMERE 337#  
 S A V BISMARCK 5682#  
 SPRINGFIELD BLACKCAP 7217

CED	Birth	Wean	Year	Milk	Scrotal	
-2	+2.1	+67	+122	+26	+55	
Marb	REA	Fat	\$W	\$F	\$G	\$B
+42	+73	-010	+61	+79	+44	+123



# Yearling Angus Bulls



## 20 NSR HIGH STEPPER 328

**Bull** AAA 20830647 FREEZE BRAND: 328 CALVED: 03/06/23  
 S A V RENOWN 3439# RITO 707 OF IDEAL 3407 7075  
**MONTANA HIGH STEPPER 0074** S A V BLACKCAP MAY 4136  
 DEER VALLEY BLACKCAP 4153 PLATTEMERE WEIGH UP K360#  
 DEER VALLEY BLACKCAP 1122  
 ELLINGSON HOMESTEAD 6030 CTS REMEDY 1T01#  
**N S R TROJAN ERICA 056** EA ERICA 1082  
 FAIRVIEW TROJAN ERICA 5078 HARB STUR-D 191 JH  
 FAIRVIEW TROJAN ERICA 2373

Birth Wt	205 Wt	WR				
78	669	99				
CED	BW	WW	YW	Milk	\$M	\$W
+3	+0.9	+58	+105	+28	+73	+54

Sound on the move with the look of performance, this bull offers a diverse pedigree with great maternal attributes.  
 His young dam holds a WR of 2@102.



## 21 NSR HIGH STEPPER 3331

**Bull** AAA 20867113 FREEZE BRAND: 3331 CALVED: 03/17/23  
 S A V RENOWN 3439# RITO 707 OF IDEAL 3407 7075  
**MONTANA HIGH STEPPER 0074** S A V BLACKCAP MAY 4136  
 DEER VALLEY BLACKCAP 4153 PLATTEMERE WEIGH UP K360#  
 DEER VALLEY BLACKCAP 1122  
 N S R UPTURN 430 SITZ UPWARD 307R#  
**N S R RITA 849** COLEMAN DONNA 812  
 N S R RITA 549 LB EMBLAZON 006  
 N S R RITA 104

Birth Wt	205 Wt	WR				
93	731	108				
CED	BW	WW	YW	Milk	\$M	\$W
+0	+2.5	+58	+109	+25	+71	+46

Well-balanced, high-performing and phenotypically attractive, this herd sire in the making has everything going for him.  
 We are excited for the future of this High Stepper Son!

## 22 NSR HIGH STEPPER 321

**Bull** AAA 20835877 FREEZE BRAND: 321 CALVED: 02/28/23  
 S A V RENOWN 3439# RITO 707 OF IDEAL 3407 7075  
**MONTANA HIGH STEPPER 0074** S A V BLACKCAP MAY 4136  
 DEER VALLEY BLACKCAP 4153 PLATTEMERE WEIGH UP K360#  
 DEER VALLEY BLACKCAP 1122  
 R R RITO 707# RITO N BAR  
**BLACK GROVE BLACK BELLE 403** ERISKAY OF ROLLIN ROCK 3  
 BLACK GROVE BLACK BELLE 110 S A F 598 BANDO 5175#  
 H 96 BLACK BELLE 442

Birth Wt	205 Wt	WR				
87	630	93				
CED	BW	WW	YW	Milk	\$M	\$W
-2	+1.4	+49	+86	+23	+55	+44

Well balanced and attractive bull that is backed by some great cow genetics.

Dam has a WR of 5@102 and YR of 2@104.

## 23 NSR HIGH STEPPER 320

**Bull** AAA 20838017 FREEZE BRAND: 320 CALVED: 02/27/23  
 S A V RENOWN 3439# RITO 707 OF IDEAL 3407 7075  
**MONTANA HIGH STEPPER 0074** S A V BLACKCAP MAY 4136  
 DEER VALLEY BLACKCAP 4153 PLATTEMERE WEIGH UP K360#  
 DEER VALLEY BLACKCAP 1122  
 COLEMAN CHARLO 0256# O C C PAXTON 730P#  
**N S R MISS WIX 402** BOHI ABIGALE 6014  
 TAR MISS WIX 876 D H D TRAVELER 6807#  
 COLEMAN MISS WIX 923

Birth Wt	205 Wt	WR				
78	616	91				
CED	BW	WW	YW	Milk	\$M	\$W
+1	-0.1	+44	+92	+28	+55	+48

This bull is attractive and clean made with an A+ disposition.  
 Calving East Trait Bull

*We look forward to  
 seeing you at the Sale!*

*Never  
 Sweat  
 Ranch*

**WWW.NEVERSWEATRANCH.COM**



# Yearling Angus Bulls

**PM Executive Decision 5'17**



REFERENCE  
SIRE

## PM EXECUTIVE DECISION 5'17

**Bull** AAA \*19310189 TATTOO: 5E CALVED: 01/24/2017  
 S A V BISMARCK 5682# G A R GRID MAKER#  
**BAR-E-L NATURAL LAW 52Y** S A V ABIGALE 0451  
 BAR-E-L MAGNOLIA 143K BAR E L MCC 365 ICON 20H  
 HF THUNDERBIRD 146Y HF TIGER 5T#  
**PM BLOSSOM 124'13** HF ECHO 187N  
 POPLAR MEADOWS BLOSSOM 5'10 HF TIGER 5T#  
 REMITALL BLOSSOM 253P

CED	Birth	Wean	Year	Milk	Scrotal	
+4	+3.0	+62	+104	+22	+1.18	
Marb	REA	Fat	\$W	\$F	\$G	\$B
+3.39	+9.94	-.017	+53	+98	+46	+14

**S Architect 9501**



REFERENCE  
SIRE

## S ARCHITECT 9501

**Bull** AAA \*19437622 TATTOO: 9501 CALVED: 02/02/2019  
 KM BROKEN BOW 002# SUMMITCREST COMPLETE 1P55#  
**SYDGEN BLUEPRINT** SUMMITCREST PRINCESS 0P12#  
 SITZ FLORABELLE FANNY 4735 SITZ INVESTMENT 660Z#  
 S WHITLOCK 179# SITZ FLORABELLE FANNY 2683#  
**S BLOSSOM 7514** S CHISUM 6175#  
 S BLOSSOM 5525 S PRIDE ANNA 709#  
 CONNEALY COURAGE 25L#  
 S BLOSSOM 374#

CED	Birth	Wean	Year	Milk	Scrotal	
+8	+0.4	+92	+155	+22	+1.52	
Marb	REA	Fat	\$W	\$F	\$G	\$B
+55	+77	+029	+83	+113	+48	+161

**Mead Magnitude**



REFERENCE  
SIRE

## MEAD MAGNITUDE

**Bull** AAA \*18543414 TATTOO: Q452 CALVED: 12/04/2015  
 NICHOLS EXTRA K205# NICHOLS BLACK HEIRESS F346  
**K C F BENNETT SOUTHSIDE#** BON VIEW NEW DESIGN 208#  
 K C F MISS 208 S11# K C F MISS 338 P14#  
 PLATTEMERE WEIGH UP K360# SITZ UPWARD 307R#  
**MEAD PRIMROSE N198#** BARBARA OF PLATTEMERE 337#  
 MEAD PRIMROSE K247# SITZ ALLIANCE 6595#  
 MEAD PRIMROSE G329

CED	Birth	Wean	Year	Milk	Scrotal	
+13	-0.5	+83	+154	+39	+1.22	
Marb	REA	Fat	\$W	\$F	\$G	\$B
+6.64	+9.0	-.030	+92	+95	+59	+154

**KG Solution 9092**



REFERENCE  
SIRE

## KG SOLUTION 9092

**Bull** AAA 19655910 TATTOO: 9092 CALVED: 01/25/2019  
 MOGCK SURE SHOT# MYTTY IN FOCUS#  
**KG SOLUTION 0018#** MOGCK BLACK LASS 2065  
 KG RITO LADY 8724 KG ONWARD 6221  
 KG RITO LADY 8187  
 SITZ DIVIDEND 649C BARSTOW CASH#  
**KG ERICA 7055** SITZ BARBARAMERE NELL 39A  
 KG ERICA 5214 MC CUMBER FORTUNATE 307  
 KG ERICA 2303

CED	Birth	Wean	Year	Milk	Scrotal	
<b>+3</b>	<b>+0.7</b>	<b>+79</b>	<b>+137</b>	<b>+32</b>	<b>+1.05</b>	
Marb	REA	Fat	\$W	\$F	\$G	\$B
<b>+31</b>	<b>+53</b>	<b>+057</b>	<b>+83</b>	<b>+96</b>	<b>+30</b>	<b>+127</b>

# Yearling Angus Bulls

**Musgrave 316 Stunner**

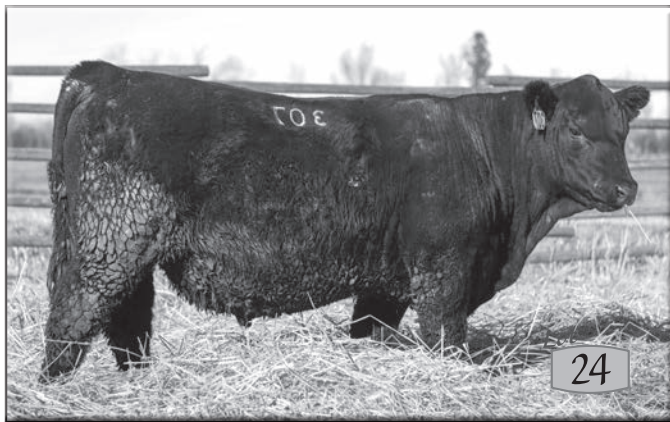


REFERENCE  
SIRE

## MUSGRAVE 316 STUNNER

AAA \*18467508 TATTOO: 1676 CALVED: 02/19/2016  
**Bull**  
 CONNEALY CAPITALIST 028# S A V FINAL ANSWER 0035#  
**LD CAPITALIST 316#** PRIDES PITA OF CONANGA 8821  
 LD DIXIE ERICA 2053 C A FUTURE DIRECTION 5321#  
 LD DIXIE ERICA OAR 0853  
 MCATL PURE PRODUCT 903-55# CONNEALY FINAL PRODUCT#  
**MCATL BLACKBIRD 831-1378#** M A ESTA 55-252#  
 MCATL BLACKBIRD 1378-573 CONNEALY REFLECTION#  
 MA BLACKBIRD 573

CED	Birth	Wean	Year	Milk	Scrotal	
+5	+2	+68	+116	+33	+1.27	
Marb	REA	Fat	\$W	\$F	\$G	\$B
+91	+59	+100	+80	+112	+58	+171



## 24 NSR EXECUTIVE ORDER 307

AAA +20830645 FREEZE BRAND: 307 CALVED: 02/09/23  
**Bull**  
 BAR-E-L NATURAL LAW 52Y S A V BISMARK 5682#  
**PM EXECUTIVE DECISION 5'17** BAR-E-L MAGNOLIA 143K  
 PM BLOSSOM 124'13 HF THUNDERBIRD 146Y  
 POPLAR MEADOWS BLOSSOM 5'10  
 HYLINE RIGHT TIME 338# LEACHMAN RIGHT TIME#  
**L A R RITA GAL 62** HYLINE PRIDE 265  
 C A R RITA 1724 D H D TRAVELER 6807#  
 C A R LADY RITA KAREN 724

Birth Wt	205 Wt	WR				
91	727	ET				
CED	BW	WW	YW	Milk	\$M	\$W
-1	+3.8	+59	+108	+25	+53	+50

A headliner in this year's bull offering. A performance powerhouse with exceptional phenotype, capacity, and muscle. This excellent footed bull is a standout with great breeding potential.

His dam is one of the best in the herd, she is built right with longevity. She holds a WR of 11@108, YR of 9@108, and a calving interval of 13@369.



## 25 NSR ARCHITECT 327

AAA 20830628 FREEZE BRAND: 327 CALVED: 03/09/23  
**Bull**  
 SYDGEN BLUEPRINT KM BROKEN BOW 002#  
**S ARCHITECT 9501** SITZ FLORABELLE FANNY 4735  
 S BLOSSOM 7514 S WHITLOCK 179#  
 S BLOSSOM 5525  
 LB EMBLAZON 006 O C C EMBLAZON 854E#  
**N S R BLACKCAP 415** PAWS UP RITA 2595  
 N S R BLACKCAP 109# OX BOW EMBLAZON 6408  
 TAR BLACKCAP 904

Birth Wt	205 Wt	WR				
86	758	112				
CED	BW	WW	YW	Milk	\$M	\$W
+5	+1.3	+77	+129	+24	+78	+66

Powerfully built, this stout made bull has excellent phenotype and muscle shape.

His dam is an ideal Angus female with exceptional udder quality and hoof shape.



# Yearling Angus Bulls



26

**Bull** AAA Pending FREEZE BRAND: 302 CALVED: 02/22/23  
 LD CAPITALIST 316# CONNEALY CAPITALIST 028#  
**MUSGRAVE 316 STUNNER#** LD DIXIE ERICA 2053  
 MCATL BLACKBIRD 831-1378# MCATL PURE PRODUCT 903-55#  
 MCATL BLACKBIRD 1378-573  
 HYLINE RIGHT TIME 338# LEACHMAN RIGHT TIME#  
 HYLINE PRIDE 265  
**L A R RITA GAL 62** D H D TRAVELER 6807#  
 C A R RITA 1724 C A R LADY RITA KAREN 724

Birth Wt	205 Wt	WR				
68	727	100				
CED	BW	WW	YW	Milk	\$M	\$W
I+0	I+2.4	I+63	I+113	I+31		

This guy is attractive, thick made, and good.



27

## NSR STUNNER 315

**Bull** AAA 20830624 FREEZE BRAND: 315 CALVED: 02/25/23  
 LD CAPITALIST 316# CONNEALY CAPITALIST 028#  
**MUSGRAVE 316 STUNNER** LD DIXIE ERICA 2053  
 MCATL BLACKBIRD 831-1378# MCATL PURE PRODUCT 903-55#  
 MCATL BLACKBIRD 1378-573  
 MUSGRAVE BOULDER# HOOVER DAM#  
**MUSGRAVE PRIMROSE 356** MILL BRAE SA JAUNTY 3079  
 SAV PRIMROSE 7861 S A F 598 BANDO 5175#  
 S A V PRIMROSE 8244#

Birth Wt	205 Wt	WR				
90	632	94				
CED	BW	WW	YW	Milk	\$M	\$W
+4	+2.0	+57	+100	+34	+54	+58

Excellent prospect here, long made, and thick ended with a great maternal pedigree.

His dam is a big outlined, heavy milking direct daughter of the \$70,000 donor dam of Musgrave Big Sky, SAV Primrose 7861 with a calving interval of 6 @ 374.

28

## NSR MAGNITUDE 314

**Bull** AAA 20832562 FREEZE BRAND: 314 CALVED: 02/22/23  
 K C F BENNETT SOUTHSIDE# NICHOLS EXTRA K205#  
**MEAD MAGNITUDE** K C F MISS 208 S11#  
 MEAD PRIMROSE N198# PLATTMERE WEIGH UP K360#  
 MEAD PRIMROSE K247#  
 ELLINGSON HOMESTEAD 6030 CTS REMEDY 1T01#  
**N S R ELONA 152** EA ERICA 1082  
 N S R ELBAS ELONA 642 OCC ULTIMATE ANSWER 118  
 N S R ELBAS ELONA 024

Birth Wt	205 Wt	WR				
74	678	101				
CED	BW	WW	YW	Milk	\$M	\$W
+10	+0.2	+71	+132	+32	+74	+64

A great combination of pedigree and numeric values, this maternally bred calving ease prospect is sound traveling.

From a beautiful young maternal cow with a neat udder.

29

## NSR BRAVO 308

**Bull** AAA 20832658 FREEZE BRAND: 308 CALVED: 03/24/23  
 COLEMAN CHARLO 0256# O C C PAXTON 730P#  
**COLEMAN BRAVO 6313** BOHI ABIGALE 6014  
 COLEMAN DONNA 714 CONNEALY ONWARD#  
 COLEMAN DONNA 386  
 N S R CACHE 709 BARSTOW CASH#  
**N S R DONNA 960** L A R RITA GAL 62  
 COLEMAN DONNA 187 N BAR SHADOW X4124  
 COLEMAN DONNA 386

Birth Wt	205 Wt	WR				
96	756	112				
CED	BW	WW	YW	Milk	\$M	\$W
+2	+3.9	+67	+119	+23	+97	+48

A powerful performance bull with the herd sire look. One of the highest \$M bulls in the offering, and bred to perform. \$M in the top 1%.

He stems from a beautiful young female with a WR of 3@109, YR of 3@105, and a calving interval of 3@369.

30

## NSR PROFOUND 352

**Bull** AAA 20840248 FREEZE BRAND: 352 CALVED: 09/25/22  
 SITZ STELLAR 726D MOHNEN SUBSTANTIAL 272#  
**SITZ PROFOUND 680G** SITZ PRIDE 200B  
 SITZ EPPONIA 223C# SITZ UPWARD 9873  
 SITZ EPPONIA 31Z  
 N S R CACHE 709 BARSTOW CASH#  
**N S R ELBAS PARTINA 080** L A R RITA GAL 62  
 N S R ELBAS PARTINA 907 CONNEALY THUNDER#  
 L A R SPECIAL ELBAS 54#

Birth Wt	205 Wt	WR				
70	-	-				
CED	BW	WW	YW	Milk	\$M	\$W
+5	+0.3	+62	+114	+28	+74	+56



Dam of Lot 27

# Yearling Angus Bulls

31

## NSR SOLUTION 340

**Bull** AAA 20840152 FREEZE BRAND: 340 CALVED: 03/25/23  
 KG SOLUTION 0018# MOGCK SURE SHOT#  
**KG SOLUTION 9092** KG RITO LADY 8724  
 KG ERICA 7055 SITZ DIVIDEND 649C  
 EXAR DENVER 2002B# EXAR UPSHOT 0562B#  
**N S R EVERELDA ENTENSE 641** EXAR ROYAL LASS 1067  
 COLEMAN EVERELDA ENTENSE 856 O C C EMBLAZON 854E#  
 BT EVERELDA ENTENSE 613L

Birth Wt	205 Wt	WR				
78	639	95				
CED	BW	WW	YW	Milk	\$M	\$W
+7	+0.2	+64	+109	+27	+75	+64

Calving Ease Trait Bull

32

## NSR SOLUTION 318

**Bull** AAA 20830643 FREEZE BRAND: 318 CALVED: 04/02/23  
 KG SOLUTION 0018# MOGCK SURE SHOT#  
**KG SOLUTION 9092** KG RITO LADY 8724  
 KG ERICA 7055 SITZ DIVIDEND 649C  
 COLEMAN CHARLO 0256# O C C PAXTON 730P#  
**N S R EVERELDA ENTENSE 7755** BOHI ABIGALE 6014  
 COLEMAN EVERELDA ENTENSE 841 WULFFS EXT 6106#  
 BT EVERELDA ENTENSE 613L

Birth Wt	205 Wt	WR				
87	700	104				
CED	BW	WW	YW	Milk	\$M	\$W
+3	+0.9	+66	+116	+31	+77	+63

Check out this young bull. He is built right and good on the move.  
 His dam is a model angus with a WR of 4@102.





# Two Year Old Bulls

**PM Executive Decision 5'17**



REFERENCE  
SIRE

**PM EXECUTIVE DECISION 5'17**

AAA \*19310189 TATTOO: 5E CALVED: 01/24/2017  
 Bull S A V BISMARCK 5682# G A R GRID MAKER#  
 S A V ABIGALE 0451  
**BAR-E-L NATURAL LAW 52Y**  
 BAR-E-L MAGNOLIA 143K  
 BAR E L MCC 365 ICON 20H  
 DOUBLE FOUR DUCHESS 12G  
 HF THUNDERBIRD 146Y  
 HF TIGER 5T#  
 HF ECHO 187N  
**PM BLOSSOM 124'13**  
 POPLAR MEADOWS BLOSSOM 5'10  
 HF TIGER 5T#  
 REMITALL BLOSSOM 253P

CED	Birth	Wean	Year	Milk	Scrotal	
+4	+3.0	+62	+104	+22	+1.18	
Marb	REA	Fat	\$W	\$F	\$G	\$B
+39	+94	-.017	+53	+98	+46	+14

REFERENCE  
SIRE

**N S R CAPSTONE 801**

AAA 19269796 TATTOO: 801 CALVED: 01/20/2018  
 Bull S A V FINAL ANSWER 0035# SITZ TRAVELER 8180#  
 S A V EMULOUS 8145  
**CONNEALY CAPITALIST 028#**  
 PRIDES PITA OF CONANGA 8821 C R A BEXTOR 872 5205 608#  
 PRIDES TRAV OF CONANGA 6499  
 S CHISUM 6175#  
 S ALLIANCE 3313  
 S GLORIA 464#  
**N S R ELBA LADY 307**  
 L A R SPECIAL ELBAS 54# W C C SPECIAL DESIGN L309#  
 LADY ELBAS C08 H A R B

CED	Birth	Wean	Year	Milk	Scrotal	
+13	-1.6	+66	+102	+21	+45	
Marb	REA	Fat	\$W	\$F	\$G	\$B
+21	+51	+032	+68	+66	+27	+93



Dam of Lot 33





# Two Year Old Bulls



**33**

## NSR CAPTAIN 235

**Bull** AAA 20549132 FREEZE BRAND: 235 CALVED: 04/25/22  
 CONNEALY CAPITALIST 028# S A V FINAL ANSWER 0035#  
**N S R CAPSTONE 801** PRIDES PITA OF CONANGA 8821  
 N S R ELBA LADY 307 S CHISUM 6175#  
 L A R SPECIAL ELBAS 54#  
 COLEMAN CHARLO 0256# O C C PAXTON 730P#  
**N S R HENRIETTA PRIDE 945** BOHI ABIGALE 6014  
 DEER VALLEY HENRIETTA 2212 CONNEALY IMPRESSION#  
 SITZ HENRIETTA PRIDE 639T

Birth Wt	205 Wt	WR				
<b>80</b>	<b>859</b>	<b>129</b>				
CED	BW	WW	YW	Milk	\$M	\$W
<b>+5</b>	<b>+2.6</b>	<b>+79</b>	<b>+115</b>	<b>+25</b>	<b>+81</b>	<b>+81</b>

High on our list, this standout bull is a uniquely bred herd bull prospect that is long in his build and stout made.

His powerful young dam is one of our favorites, holds a WR of 2@119.



**34**

## NSR SOLUTION 231

**Bull** AAA 20549108 FREEZE BRAND: 231 CALVED: 03/28/22  
 KG SOLUTION 0018# MOGCK SURE SHOT#  
**KG SOLUTION 9092** KG RITO LADY 8724  
 KG ERICA 7055 SITZ DIVIDEND 649C  
 KG ERICA 5214  
 EXAR DENVER 2002B# EXAR UPSHOT 0562B#  
**N S R EVERELDA ENTENSE 527** EXAR ROYAL LASS 1067  
 COLEMAN EVERELDA ENTENSE 856 O C C EMBLAZON 854E#  
 BY EVERELDA ENTENSE 613L

Birth Wt	205 Wt	WR				
<b>73</b>	<b>660</b>	<b>99</b>				
CED	BW	WW	YW	Milk	\$M	\$W
<b>+9</b>	<b>-0.4</b>	<b>+63</b>	<b>+104</b>	<b>+29</b>	<b>+71</b>	<b>+64</b>

Sleep all night heifer bull who is rugged made.

Calving Ease Trait Bull



# Two Year Old Bulls



## 35 NSR CRACKERJACK 240

Bull AAA 20611876 FREEZE BRAND: 240 CALVED: 03/25/22

MUSGRAVE 316 STUNNER  
**MUSGRAVE CRACKERJACK**  
MUSGRAVE RITO JET A649

LD CAPITALIST 316#  
MCATL BLACKBIRD 831-1378#  
MUSGRAVE BIG SKY#  
G C F MISS NEW LEVEL R216

SITZ DASH 10277#  
**N S R ELBAS PARTINA 107**  
N S R ELBAS PARTINA 907

SITZ UPWARD 307R#  
SITZ EVERELDA ENTENSE 2665  
CONNEALY THUNDER#  
L A R SPECIAL ELBAS 54#

Birth Wt	205 Wt	WR				
80	648	96				
CED	BW	WW	YW	Milk	\$M	\$W
+7	+0.4	+56	+100	+30	+51	+57

A good looking thick made Crackerjack son which offers calving ease and longevity. His beautiful dam is consistent as they come and a model angus cow, holding a WR of 8@104, YR of 6@105, and a calving interval 10@368.



## 37 NSR EXECUTIVE DECISION 228

Bull AAA 20553445 FREEZE BRAND: 228 CALVED: 03/13/22

BAR-E-L NATURAL LAW 52Y  
**PM EXECUTIVE DECISION 5'17**  
PM BLOSSOM 124'13

S A V BISMARCK 5682#  
BAR-E-L MAGNOLIA 143K  
HF THUNDERBIRD 146Y  
POPLAR MEADOWS BLOSSOM 5'10

HARB STUR-D 191 JH  
**FAIRVIEW TROJAN ERICA 5078**  
FAIRVIEW TROJAN ERICA 2373

LEACHMAN RIGHT TIME#  
H A R B BLACK LADY 073 J H#  
O C C EUREKA 865E#  
BASIN TROJAN ERICA 5075#

Birth Wt	205 Wt	WR				
77	619	93				
CED	BW	WW	YW	Milk	\$M	\$W
+8	+1.1	+47	+77	+25	+65	+47

Sound on the move with the look of a performance sire, this calving ease specialist offers a pedigree with great maternal attributes

## 36 NSR SOLUTION 236

Bull AAA 20549107 FREEZE BRAND: 236 CALVED: 04/22/22

KG SOLUTION 0018#  
**KG SOLUTION 9092**  
KG ERICA 7055

MOGCK SURE SHOT#  
KG RITO LADY 8724  
SITZ DIVIDEND 649C  
KG ERICA 5214

COLE CREEK CEDAR RIDGE 1V#  
**N S R CLOVADA 416#**  
N S R QUEEN ALICE 209

COLE CREEK BLACK CEDAR 46P#  
COLE CREEK CLOVANADA 49S#  
S CHISUM 6175#  
L A R QUEEN ALICE 715

Birth Wt	205 Wt	WR				
74	684	103				
CED	BW	WW	YW	Milk	\$M	\$W
+7	+0.4	+62	+109	+32	+85	+61

A low birth weight bull that ranks in the top 5% of the breed for \$Maternal and top 15% for Milk.  
His dam is a wonderful cow that consistently produces, she holds a WR of 8@106 and a calving interval of 8@372.  
Calving Ease Trait Bull

## 38 NSR RAINOUT 232

Bull AAA 20809592 FREEZE BRAND: 232 CALVED: 03/31/22

S A V RAINDANCE 6848#  
**N S R RAINOUT 018**  
N S R COUNTESS POLLY 412

COLEMAN CHARLO 0256#  
S A V BLACKCAP MAY 4136  
VIN-MAR O'REILLY FACTOR#  
N S R COUNTESS POLLY 721#

S A V PRESIDENT 6847  
**N S R LAKE BELL 948**  
N S R LAKE BELL 103#

COLEMAN CHARLO 0256#  
S A V BLACKCAP MAY 4136  
OX BOW EMBLAZON 7373  
N S R LAKE BELL 838

Birth Wt	205 Wt	WR				
74	637	103				
CED	BW	WW	YW	Milk	\$M	\$W
+9	+0.2	+63	+109	+28	+63	+60

Thick made and square hipped, this moderate, wide based bull has great phenotype and incredible maternal credentials.

## Fall Pairs

### FALL PAIR OFFERING

This year we are selling 2021 cows with fall calves at their sides. The cows are part of our new fall program and they've raised these calves unassisted on the range. The cows sell open and are ready to join any herd.

**A**

PAIR

#### NEVER SWEAT RANCH

2021 Cow with Calf

**B**

PAIR

#### NEVER SWEAT RANCH

2021 Cow with Calf

**C**

PAIR

#### NEVER SWEAT RANCH

2021 Cow with Calf

## Angus Heifers

### ANGUS HEIFER OFFERING

**D**

HEIFERS

#### NEVER SWEAT RANCH

Selling 5 outstanding commercial Angus yearling heifers from Never Sweat Ranch.

**E**

HEIFERS

#### NEVER SWEAT RANCH

Selling 5 outstanding commercial Angus yearling heifers from Never Sweat Ranch.

**F**

HEIFERS

#### KERSLAKE RANCH

Selling 5 outstanding commercial Angus yearling heifers from Kerslake Ranch.





11th  
Annual

# NEVER SWEAT RANCH

**FEBRUARY 24, 2024**

## BULL SALE

**1:00 PM MST**

**Missoula, MT**

**FIVE VALLEYS LIVESTOCK**

**WIN HER  
SALE DAY!**



— **SELLING** —

30 YEARLING BULLS

4 HEREFORD BULLS

6 TWO YEAR OLD BULLS

3 PAIRS

15 HEIFERS

**Never  
Sweat  
RANCH**

Cody & Ashley Lee  
1025 Hwy 93 S.  
Hamilton, MT 59840

PRESORTED  
**FIRST CLASS**  
US Postage  
Paid  
Ballyhoo Printing  
59457

**FIRST CLASS**

**[www.neversweatranch.com](http://www.neversweatranch.com)**